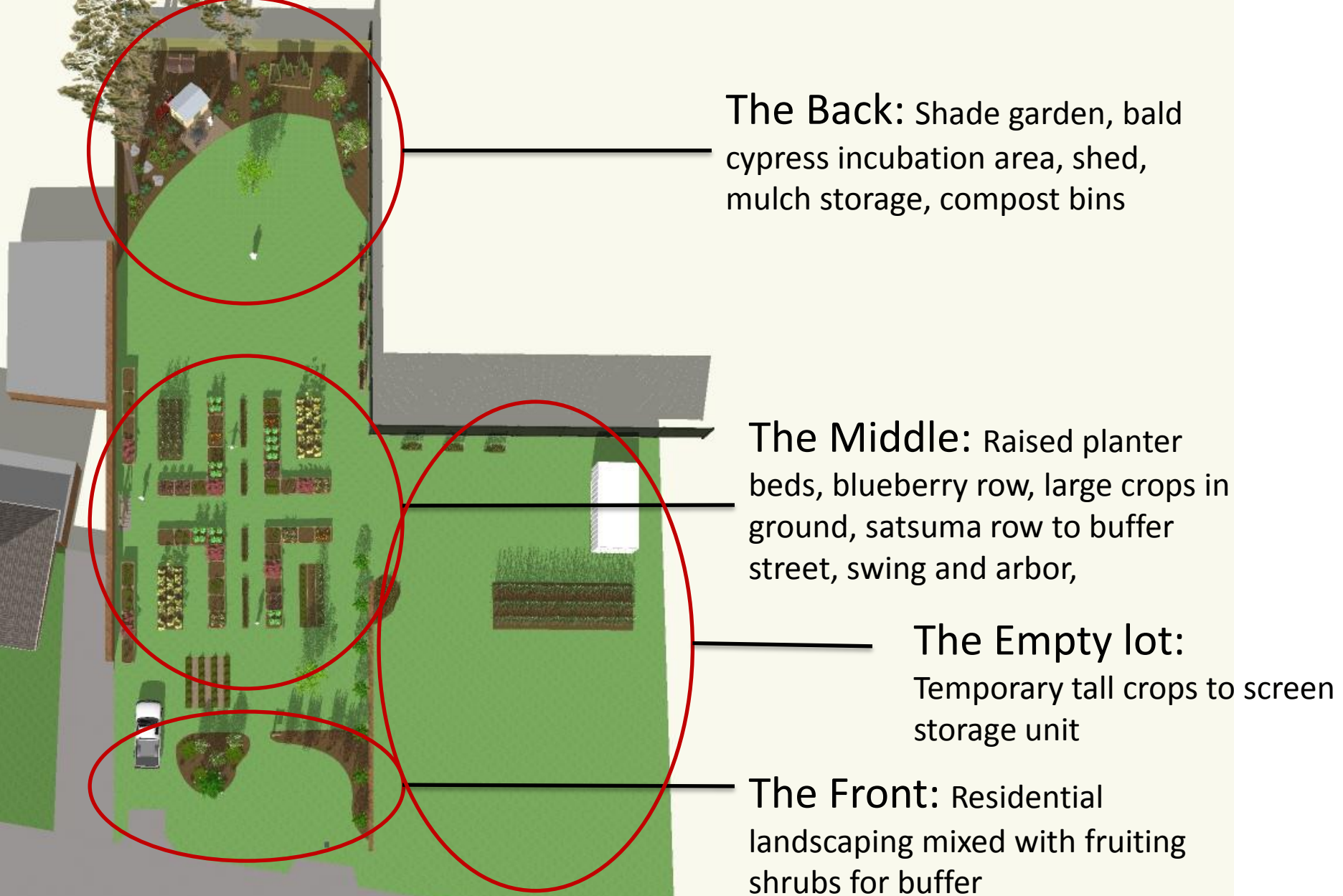




# Margaret Place Community Garden:

a meeting place for a “growing” community



# Project Overview





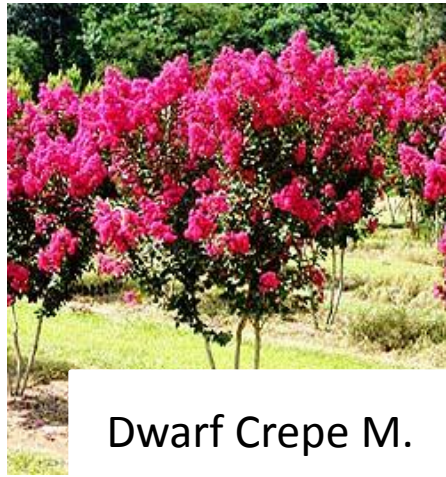
# The Front:

A mix of a residential landscape palate and a few fruiting shrubs that will produce a screen and allow the Garden to blend into the residential fabric of Margaret Place





Knockout Roses



Dwarf Crepe M.



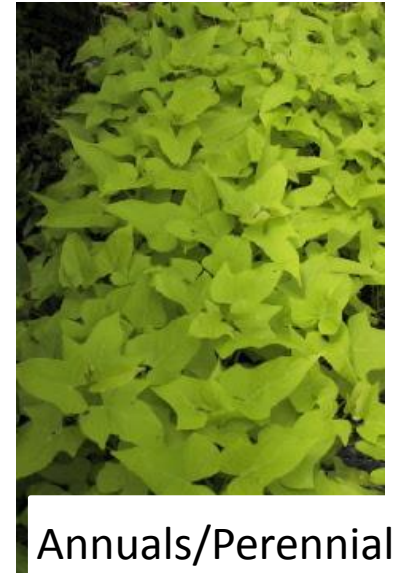
Annuals/Perennials



Pomegranate



Dianella Flax



Annuals/Perennials

# Planting Palette





# The Middle:

The most productive area of the garden, this section will be home to up to 44 raised planter boxes, four large plots in the ground, and a “blueberry median” through the main walkway





Blueberry Bush



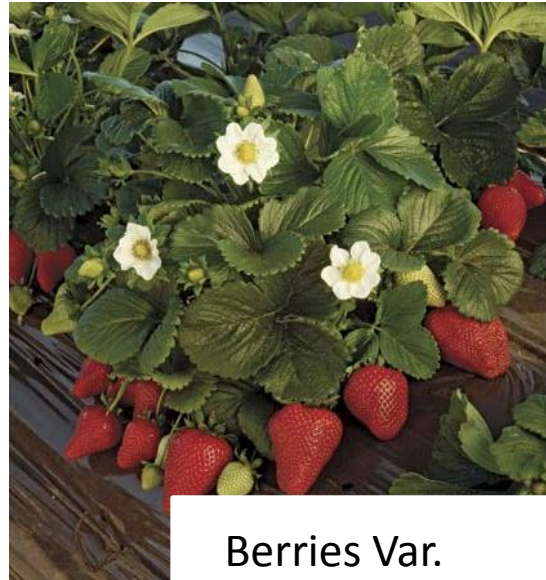
Vegetables Var.



Seasonal Flowers



Satsuma/Citrus



Berries Var.



Annuals/Perennials

# Planting Palette





# The Middle Overview





## The Back:

The northern most third of the property boasts the most shade making it less attractive for food production, but a great place to cool off after working in the garden. A shed for storage, a table and chairs, and a hidden compost bin can coexist with an incubation area for Bald Cypress seedlings and a shade garden





Camellias Var.



Bulbs Var.



LA Iris



Hostas



Ferns Var,



Camellias Var.

# Planting Palette





# The Empty Lot:

The empty lot on the east side of the Community Garden Property may be used for some larger scale crop rows in the ground that can screen the storage unit on the property. Blackberry bushes could also be planted along the back fence with trellises. The LA iris bed will also be maintained.





Okra



Blackberry Vine



LA Iris



Seasonal flowers

# Planting Palate

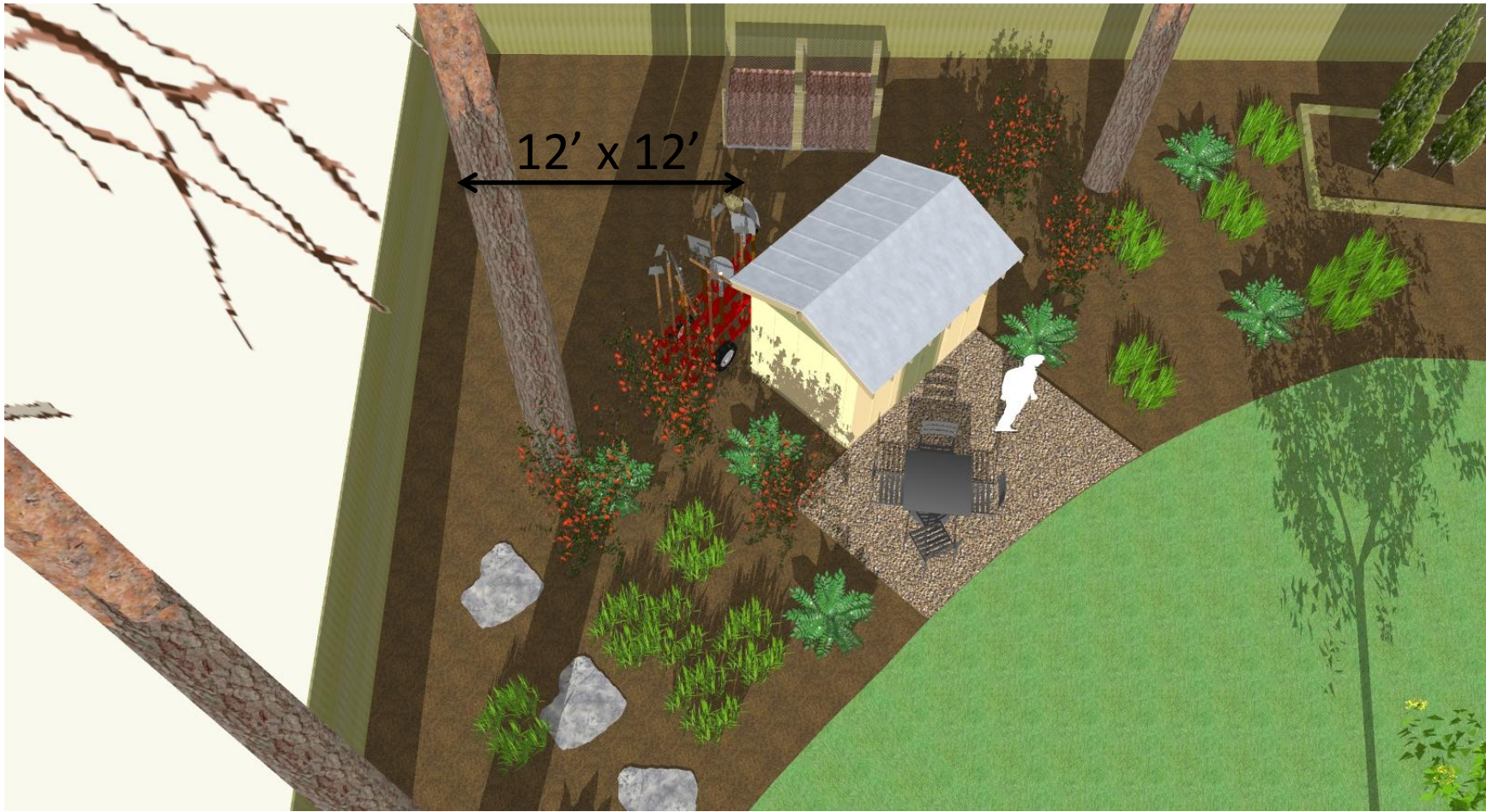




# The Planters:

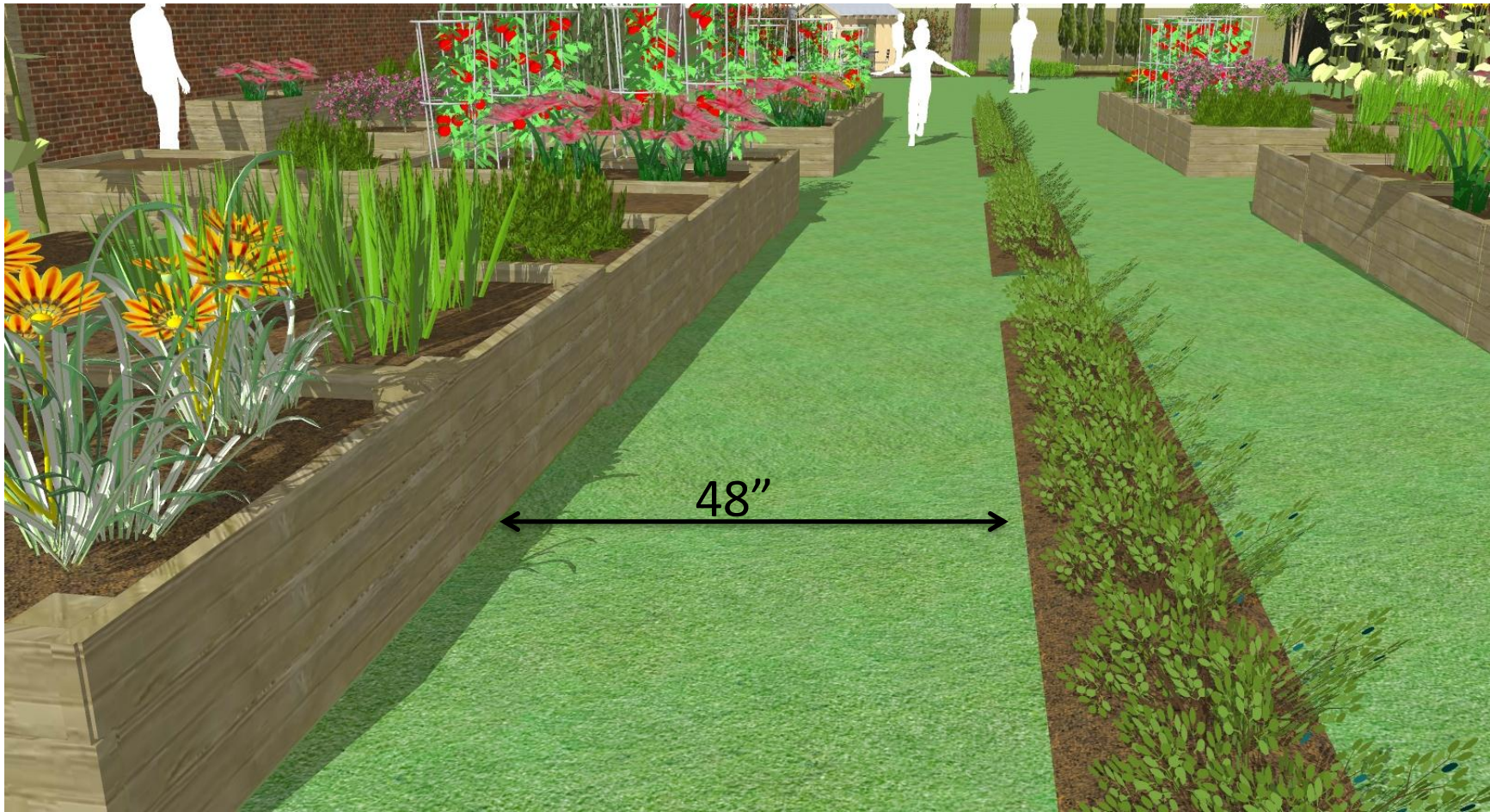
The 36 planters in the center of the property are 4'x 4' and 18" tall. These planters form the four "L" shaped raised beds. Along the east wall, eight 3'x 6' at 24" tall are placed near the edge of the property.





# The Shed and Storage Area





# The Blueberry Walkway





# The Arbor and Swing